

SAFETY RECALL CODE 0826 - SIDESTAND LEG FOR 2003 LIGHTNING XB9SL

Purpose

As recently advised, Buell Motorcycle Company has decided that there is a safety defect with the sidestand legs on certain 2003 XB9SL motorcycles which causes them to have the potential to bend or break without notice, thereby allowing the motorcycle to fall and potentially cause an injury.

Motorcycles Affected

This campaign involves all 2003 domestic Buell XB9SL motorcycles manufactured between February 18th through March 5th, 2003.

Replacement Sidestand Legs

See [Figure 1](#). The correct replacement sidestand for the purpose of this bulletin is Part No. 94218Y.

Customer Notification

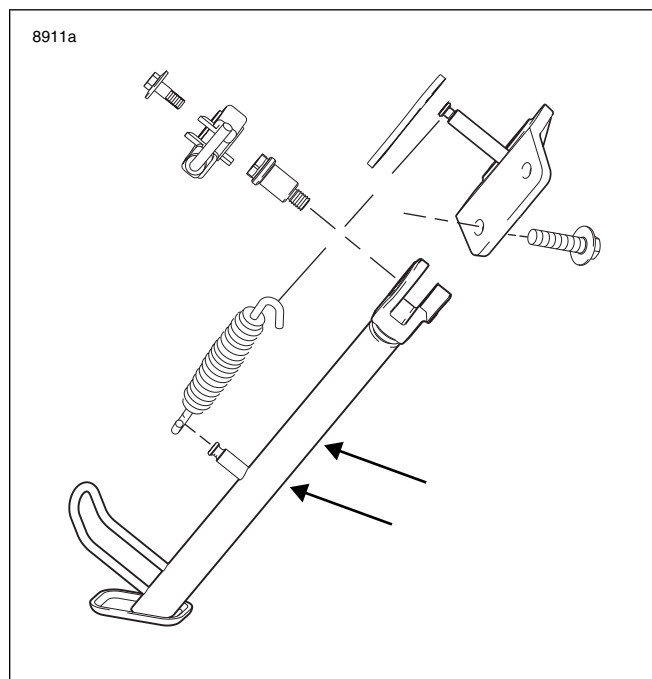
Attached is a complete list of all vehicles shipped that are involved in this recall campaign. To protect the safety of our riders, it is our mutual responsibility to ensure that the recall service is performed on all affected motorcycles. Therefore, we strongly urge you to perform the recall service even if the motorcycle was not purchased from your dealership. You also are required to perform the recall service on all affected vehicles in your dealership inventory prior to delivering or leasing those vehicles.

If you are not sure that the safety recall service has been completed on a particular motorcycle, recall information is available on TALON and h-dnet.com.

IMPORTANT NOTE

Because only registered owners as shown on the attached list will receive notification from us, we request that you contact any owners of vehicles still listed as unregistered by your dealership. Advise them of the safety recall and make arrangements for them to come in for recall service. We also require that you provide us with their names, addresses and VIN's as soon as possible to enable us to mail them an owner's letter, as required by the National Traffic and Motor Vehicle Safety

Act (as amended).



**Figure 1. Sidestand Assembly with Sidestand Leg
(Part No. 94218Y)**

A shipment of Safety Recall Code 0826 kits, Part No. 94218Y, will contain your total estimated kit requirements. Shipments will begin on or before the week of April 21st, 2003.

All kits will be shipped no charge, transportation paid. If additional kits are needed for any reason, fill in the attached order form, complete with V.I.N., and fax it to the Warranty Department at 414-343-8346.

NOTE

Do not send in orders for additional kits until you have received your initial shipment and have determined your remaining kit requirements. Orders received before the initial shipment is completed will be discarded. Buell Motorcycle Company, reserves the right to conduct wave shipments in lieu of processing individual orders and/or adjusting order quantities, depending on the availability of replacement parts.

IMPORTANT NOTE

In the interest of preserving customer safety and satisfaction, always check for outstanding recalls whenever any motorcycle is brought into your dealership for either maintenance or service.

ROUTING	SERVICE MANAGER	SALES MANAGER	PARTS MANAGER	LEAD TECHNICIAN	TECHNICIAN NO.1	TECHNICIAN NO. 2	TECHNICIAN NO. 3	TECHNICIAN NO. 4	RETURN THIS TO
INITIAL HERE									

Required Dealer Action

Sidestand Disassembly

1. Remove two fasteners from the left side of chin fairing.

NOTE

Sidestand assembly does not have to be removed from motorcycle in order to remove sidestand leg.

2. See [Figure 2](#). Remove sidestand switch (5).
 - a. Retract sidestand leg (1).
 - b. Remove switch fastener (6).
 - c. Extend sidestand leg.
 - d. Lift sidestand switch and slide to the right away from spring post on sidestand bracket (2) and leave attached to harness.
3. Remove sidestand leg (1).
 - a. Retract sidestand leg.
 - b. Remove sidestand spring (7) and spring extension plate (3) using SNAP-ON SPRING TOOL (Part No. HE-52B).
 - c. Remove sidestand pivot bolt (4).
 - d. Extend sidestand leg and remove.

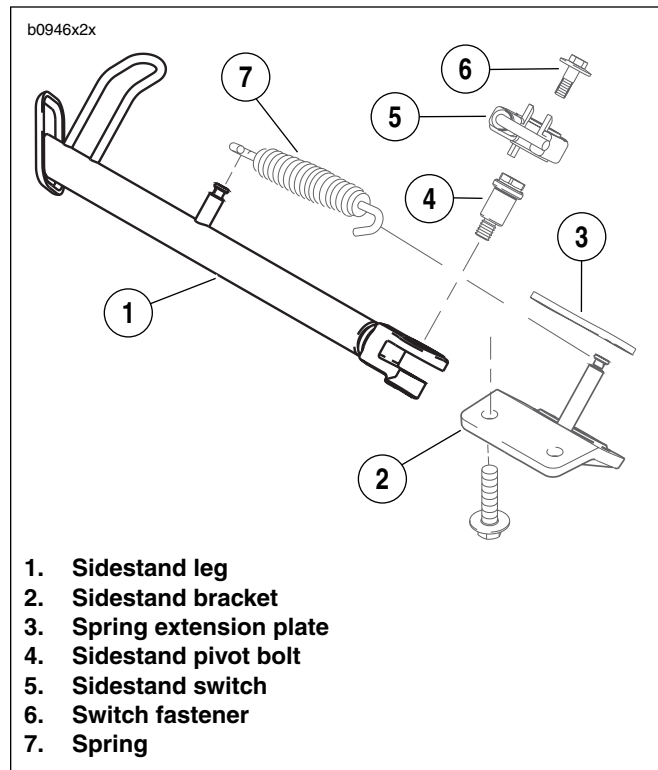


Figure 2. Sidestand Assembly

Sidestand Assembly

1. Install sidestand leg (1).
 - a. See [Figure 3](#). Lubricate sidestand pivot bolt and mating portions on sidestand bracket with WHEEL BEARING GREASE (Part No. 99855-89).
 - b. See [Figure 4](#). Apply LOCTITE 272 (Red) to threaded area (clevis) of sidestand leg.

NOTE

Applying LOCTITE to threaded area of clevis on sidestand leg, instead of threads on the pivot bolt, will eliminate build-up between clevis and sidestand bracket which can interfere with the applied lubricant.

- c. See [Figure 2](#). Install sidestand leg (1) and sidestand pivot bolt (4) tightening to 18-20 ft-lbs (24-27 Nm).
- d. Retract sidestand leg.
- e. Install spring extension plate (3) and sidestand spring (7) using SNAP-ON SPRING TOOL (Part No. HE-52B).

NOTE

Extension plate should curve away from primary chain adjustment screw to allow for clearance around adjustment screw.

2. Install sidestand switch (5).
 - a. Extend sidestand leg.
 - b. Install sidestand switch by aligning the lug on the bottom side of the switch with the corresponding hole in the sidestand leg.
 - c. Install the switch fastener (6) tightening to 36-60 in-lbs (4-7 Nm).
3. Apply LOCTITE 272 (Red) to the two fasteners for left side of chin fairing and install. Tighten to 36-48 in-lbs (4-5.4 Nm).

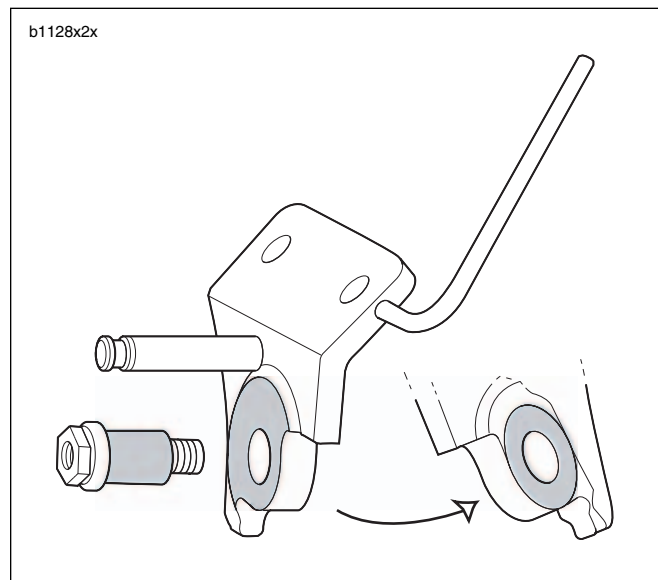


Figure 3. Lubricating Points (Shaded Areas)

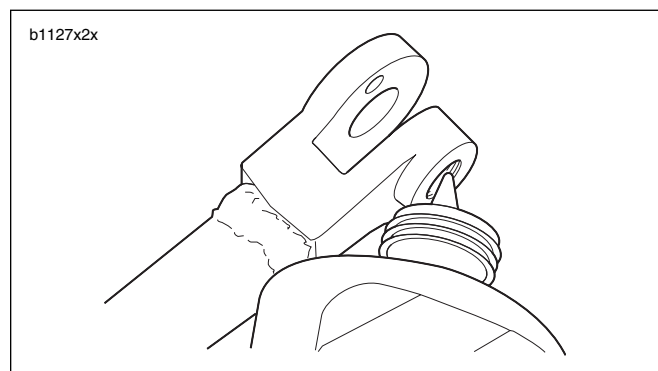


Figure 4. Threaded Area for Loctite Application

Credit Procedure- Vehicle Repair

For each vehicle serviced, place a "C" in the letter box on the Buell Dealer Service Card. Package the original sidestand leg and the properly completed Buell Dealer Service Card and send to Buell Motorcycle Company, Warranty Return Department, 3801 W. Juneau Ave., Milwaukee, WI 53208.

Upon receipt of each replaced sidestand leg and the properly completed Buell Dealer Service Card, you will be credited 0.5 hrs. labor, which includes 0.1 hr. administration time, and return postage. No credit will be issued for parts as replacement parts were sent no charge, transportation paid.

NOTE

The actual time for replacement of the sidestand leg, including 0.1 hr. for administration time, has been determined to be a total of 0.2 hr. Because of the disruption to your service operation caused by this situation, and as a small incentive to help achieve a high percentage of completion, the dealership will be compensated 0.5 hr. for this task.

IMPORTANT NOTE

It is very important that you return the replaced parts to receive appropriate credit and so we can update our records appropriately.

NOTE

*Under certain conditions, and with the requisite documentation, customers who already replaced subject sidestand leg may be reimbursed for their costs. See the attached **Buell motorcycle Company Pre-Notification Remedy Reimbursement Program** for details.*

IMPORTANT NOTE

Dealers are not responsible for reimbursing customers who have replaced subject sidestand legs prior to this recall. Advise customers that they may apply directly to Buell Motorcycle Company for reimbursement of their costs following the procedures outlined in the attached Buell motorcycle Company Pre-Notification Remedy Reimbursement Program. Provide customer with copy of said document upon request.



S O L D
NAME _____
ADDRESS _____
CITY/STATE/ZIP _____

NAME _____
 ADDRESS _____
 CITY/STATE/ZIP _____

DEALER ORDER	RC
ORDER DATE	
DEALER NO.	
ORDER TYPE	
WARRANTY CLAIM NO.	

FOR OFFICE USE ONLY
ACCT. 111-632.9
FRT. ACCT 111-632.9

[illegible]

ALL ORDERS SUBJECT TO ACCEPTANCE AT MILWAUKEE, WI 53201

PLEASE USE PART NUMBERS
DO NOT USE FOR
CORRESPONDENCE

PRINTED
IN U.S.A.