



INSTRUCTIONS

-J01697

REV. 7-23-99

Kit Number 27554-99

SCREAMIN' EAGLE® 44 mm BIG BORE CV CARBURETOR REBUILD KIT

General

This kit is designed for use on Screamin' Eagle 44mm Big Bore CV carburetor P/N 27934-99.

Additional jets and needles for tuning are included in Screamin' Eagle Big Bore 44mm CV Tuner Kit (P/N 27419-99).

CAUTION

Harley-Davidson® motorcycles equipped with some Screamin' Eagle® high-performance engine parts may not be used on public roads and in some cases must be restricted to closed course competition. This engine related performance part is intended for racing applications and is not legal for sale or use in California on pollution controlled motor vehicles. Engine related performance parts are intended for the experienced rider only.

Kit Contents

See Service Parts Illustration and list at the end of this sheet for kit contents.

NOTE

Refer to applicable Service Manual for detailed instructions to remove necessary components. Service Manuals are available from your Harley-Davidson Dealer.

⚠ WARNING

Gasoline is extremely flammable and highly explosive. Do not smoke or allow open flame or sparks anywhere in the area when servicing any part of the fuel system. Failure to follow instructions could result in death or serious injury.

Removal

For removal procedures refer to the "Fuel System" section in a 1993 or later Service Manual for Carbureted Evolution or Twin Cam model motorcycles.

Reassembly

This Big Bore carburetor uses many of the same parts and rebuilding procedures as stock 1993 and later CV Carbureted models. Refer to the "Fuel System" section of a 1993 or later Evolution or Twin Cam Service Manual for Big Bore carburetor reassembly procedures.

Installation

For installation refer to the "Fuel System" section in a 1993 or later Service Manual for Carbureted Evolution or Twin Cam model motorcycles.



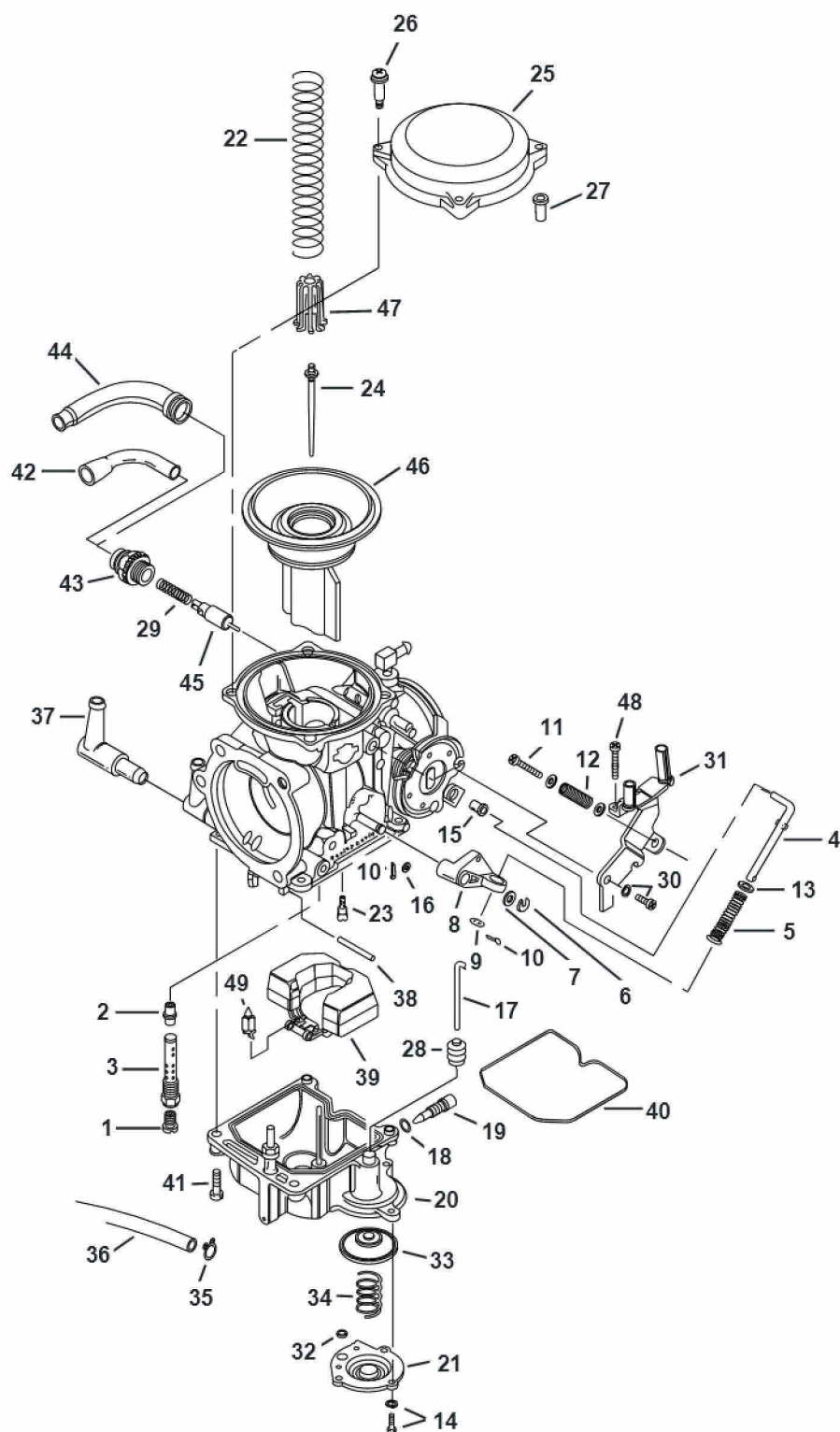
Service Parts

Kit No. 27554-99

Date 7/99

44mm Big Bore CV Carburetor Rebuild Kit

i01755.eps



NOTE

See next page for index identification and description. Service Parts have a Harley-Davidson Part No. listed.



Service Parts

Kit No. 27554-99

Date 7/99

44mm Big Bore CV Carburetor Rebuild Kit

Item	Description	Part No.	Item	Description	Part No.
1	Main Jet	See Tuner Kit	26*	Screw, Top (3)	27262-96
2	Needle jet	27725-99	27	Collar, Carburetor top	27263-96
3	Needle jet holder	27101-88	28*	Boot, accelerator top	27311-76
4	Rod	27122-89	29	Spring	27315-88A
5	Spring	27123-89A	30*	Screw	27317-88
6	E-clip	27124-89	31	Bracket, throttle cables	27339-90
7	Washer	27125-89	32*	O-ring (2)	27360-76
8	Lever	27126-89	33*	Diaphragm, accelerator pump	27361-76
9	Washer	27127-89	34*	Spring, diaphragm	27362-76
10	Pin (2)	27128-89	35	Clip, overflow hose	27368-76
11	Idle screw	27130-90	36*	Hose, overflow w/clip	27553-99
12	Spring	27136-90	37	Fitting, (L-joint)	27371-76
13	Washer	27137-81	38	Pin	27575-88A
14*	Screw w/washer (3)	27146-89	39	Float	27576-92
15	Collar	27147-89	40*	O-ring, float chamber	27577-92
16	Washer	27148-89	41*	Screw (4)	27579-88A
17	Rod	27156-89	42	Cable guide	27580-88
18	O-ring	27127-89	43	Starter cap	27581-88
19	Drain screw	27158-89	44	Cable sealing cap	27582-88
20	Float chamber assembly	27287-98	45	Starter valve	27583-88
21	Pump housing	27260-00	46*	Vacuum piston	27552-99
22	Spring	27162-89	47	Spring seat	27586-88
23	Slow jet	See Tuner Kit	48*	Screw	27587-88
24	Jet needle	See Tuner Kit	49*	Valve w/clip	27886-78A
25	Top, carburetor	27261-96			

NOTE: Items marked with an asterisk (*) and in "bold" are included in rebuild kit (P/N 27554-99). All other items are for illustration purposes only.