

Table of Contents

EVO: Engine Mechanicals - Sub-01A 3
 91-03 Timing Inspection Hole and Plug Pics and App. Dims 3

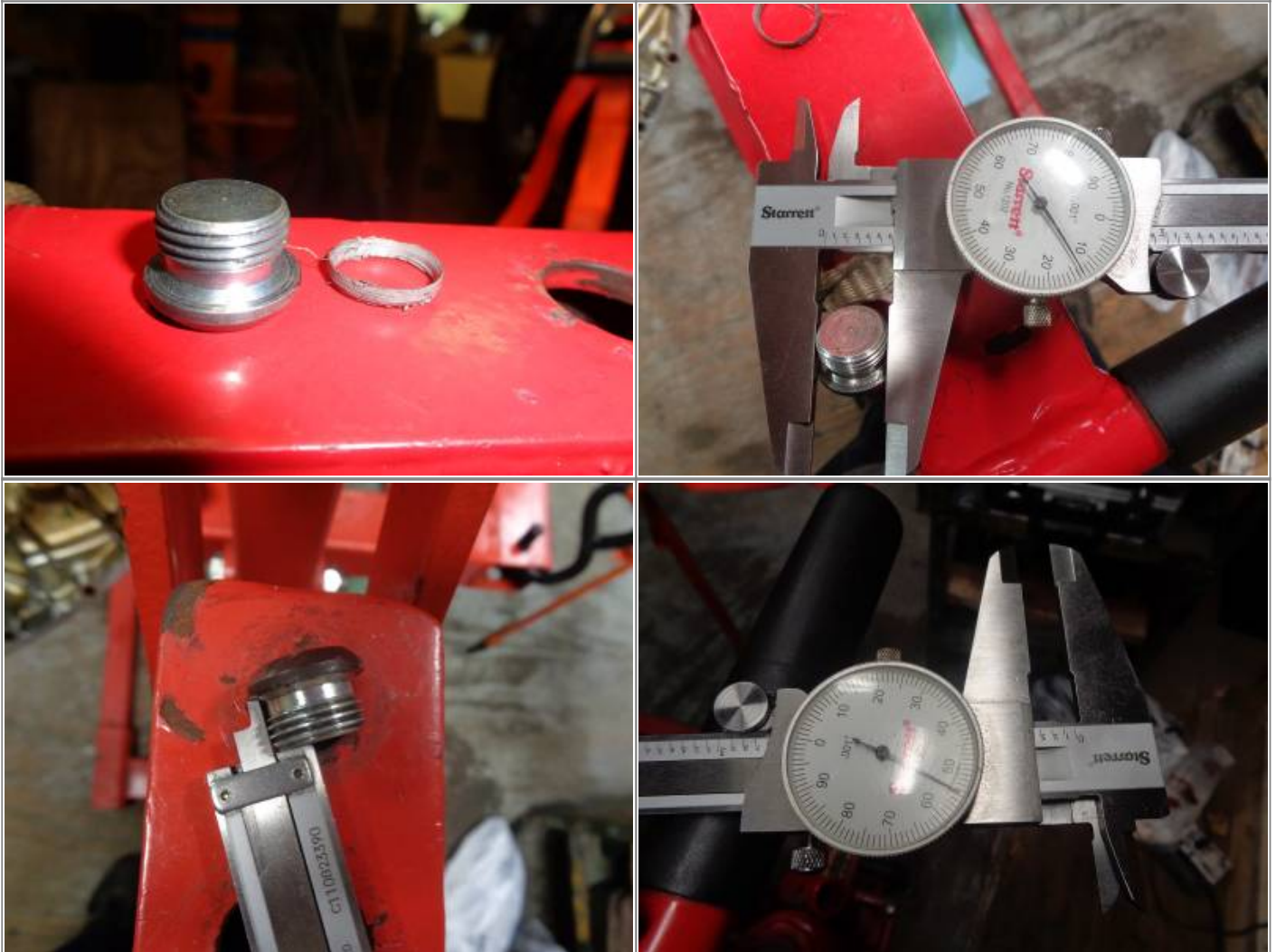
[Go To Technical Menu](#)

EVO: Engine Mechanicals - Sub-01A

See also [Timing Inspection Hole and Plug - Sealing and Thread Repair](#) in the Reference section.

91-03 Timing Inspection Hole and Plug Pics and App. Dims

5/8"x18 steel plug has straight threads with Teflon tape around the neck. ¹⁾



Straight threads in the case. Same drag on bore gauge - front to back. No taper ²⁾



App. diameter of machined outer face ³⁾

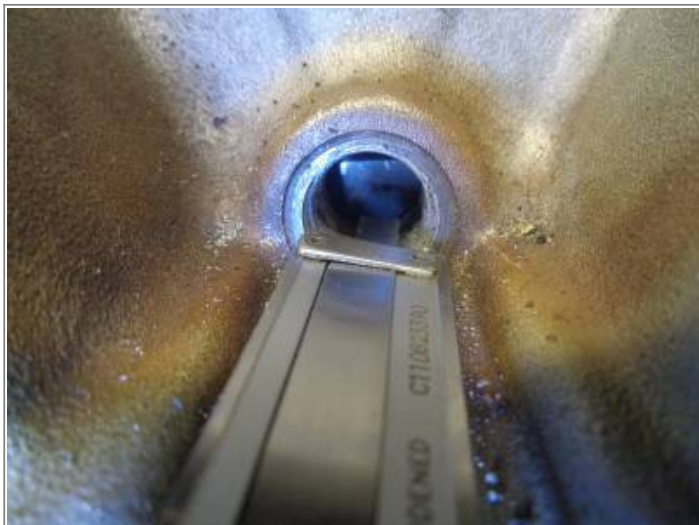


Notice the plug doesn't go all the way into the end of the case threads ⁴⁾

Flywheel sits close to the back of the hole ⁵⁾



Measured from the case outside surface to the flywheel. ⁶⁾



Measured from the case outside surface to the app. end of the case threads (app. 1/4" longer than the plug threads). ⁷⁾



Go To Technical Menu

1) , 2) , 4) , 5) , 7)

photos by Hippysmack

3)

photo by Hippysmack

6)

photos by hippysmack

From:
<http://72.167.84.123/> - **Sportsterpedia**

Permanent link:
<http://72.167.84.123/doku.php/techtalk:evo:engmech01a>

Last update: **2018/05/14 03:52**

