

# Table of Contents

<b>IH: Carburetor, Intake Manifold &amp; Exhaust</b> .....	1
<b>Intake Manifold</b> .....	1
<b>Seals - Intake to Heads</b> .....	2
<i><b>Bendix</b></i> .....	3
<i><b>Keihin Butterfly</b></i> .....	4



[Go To Technical Menu](#)

# IH: Carburetor, Intake Manifold & Exhaust

See also [Installation of Top End](#) for proper alignment of intake manifold.

## Intake Manifold

HD Sportster Manifold Part Numbers					
Year Model	Manifold Part#	Material	Throat Dia.	Bolt Hole Dims/Spacing	OEM Carb
1957-1971 Sportsters	27021-57	Cast iron	1.562"	.39" holes on a 2.688" b.c. <sup>1)</sup>	Linkert Tillotson
1972-1974 Sportsters	27021-71	Cast iron	1.562"	.33" holes on 2.750" b.c. <sup>2)</sup>	Bendix / Zenith
1975-1979 Sportsters	27021-71A	Aluminum	1.562"	.33" holes on a 2.750" b.c. <sup>3)</sup>	Bendix / Zenith Keihin "butterfly"
1980-1985 Sportster	27021-78 <sup>4)</sup>	Aluminum			Keihin "butterfly"
HD Big Twin Manifold Part Numbers					
Year Model	Manifold Part#				
1971-1975 FL/FLH/FX	27021-71 <sup>5)</sup>				
1976-E1980 FL/FX	27021-71A <sup>6) 7)</sup>				
L1980-later FX	27021-78 <sup>8)</sup>				
1972-1974 Sportster Intake Manifold (27021-71) <sup>9)</sup>					
 <p>1972-1974 Sportster Intake Manifold (27021-71)</p>		 <p>1972-1974 Sportster Intake Manifold (27021-71)</p>		 <p>1972-1974 Sportster Intake Manifold (27021-71)</p>	
1975-1979 Sportster Intake Manifold (27021-71A) <sup>10)</sup>					



[Click Here](#) to go to the TSB page in the Sportsterpedia and download TSB M-788 regarding the changes for the 27021-78 manifold.

In March, 1980, several modifications were made to heads/intake manifolds/clamps used on L1980 1200/1340cc FL/FX models to improve sealing capabilities.



## Seals - Intake to Heads

Intake to Head - Hardware History. <sup>12) 13) 14)</sup>		OEM Part Numbers
1957-78	Used exact same port sealing machining, heads and manifolds	<b>Uses O-rings - 27060-55 - Clamp 27063-57</b>
1979	Confusing because it had the o-ring machining but used rubber bands	<b>Uses rubber bands - 27062-78 - Clamp 27063-78</b>
E1980	Dropped the machining for the O-ring	<b>Uses rubber bands - 27062-78 - Clamp 27063-78</b>
L1980-1985	Uses same rubber bands as 79-E80 but different clamp	<b>Uses rubber bands - 27062-78 - Clamp 27063-80</b>
1979 models could retro fit 78-earlier interface mechanisms as a bolt on mod.		
1980-later models needed the heads to be machined for reverting to the straight up o-ring seals.		
1957-1978 Intake Manifold O-rings (27060-55) <sup>15)</sup>		1957-1978 Intake Manifold Clamp (27063-57) <sup>16)</sup>



1979-1985 Sportster Intake Manifold Rubber Bands (27062-78) <sup>17)</sup>

1979-E1980 Intake Manifold Clamp (27063-78) <sup>18)</sup>



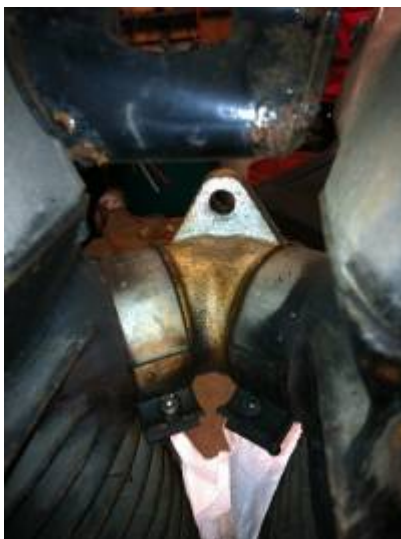
## Bendix



<sup>19)</sup>



20)



21)



22)

## Keihin Butterfly

These V-twin clamps (35-0419) work well for stopping intake leaks. The tool to install them is the same as any oiteker clamp pliers. <sup>23)</sup>



24)



25)

### Go To Technical Menu

1) 2) 3)

Dr Dick of the XLFORUM

<https://www.xlforum.net/forum/sportster-motorcycle-forum/sportster-motorcycle-era-specific-and-model-specific/ironhead-sportster-motorcycle-talk-1957-1985/179433-manifold-differences?postcount=6#post3834793>

4)

1979-1985 HD Sportster Parts Catalog

5)

HD 1961-1976 ElectraGlide/SuperGlide Parts Catalog pg 19

6)

HD 1941-1978 ElectraGlide/SuperGlide Parts Catalog pg 17

7)

HD 1971-1980 FX/SuperGlide Parts Catalog pg 25

8)

HD 1971-1984 FX Parts Catalog pg 29

9)

photos courtesy of Stripped Down Cycles [Link to Ebay Store:](#)

10)

photos courtesy of Ebay seller, animalhouse2010, [Link to Ebay store:](#)

11)

photos courtesy of Ebay seller, Robison Motorcycles [Link to Ebay Store](#)

12)

See Brucstoudt & Dr\_Dick - XLForum -

<https://www.xlforum.net/forum/sportster-motorcycle-forum/sportster-motorcycle-era-specific-and-model-specific/ironhead-sportster-motorcycle-talk-1957-1985/202688-intake-manifold-o-ring-or-rubber-band?t=2079889>

13)

also

<https://www.xlforum.net/forum/sportster-motorcycle-forum/sportster-motorcycle-era-specific-and-model-specific/ironhead-sportster-motorcycle-talk-1957-1985/73290-79-what-is-this-gasket-where-do-i-get-some?t=509757>

14)

1979-1985 HD Sportster Parts Catalog pgs 23-27

15) 17)

photo courtesy of Ebay seller, jrsvintageharley1990. [Link to Ebay Store](#)

16) 18)

photos courtesy of Ebay seller, jrsvintageharley1990. [Link to Ebay Store](#)

19) 20) 21) 22)

photo by The Doctor71 of the XLFORUM

<https://www.xlforum.net/forum/sportster-motorcycle-forum/sportster-motorcycle-intake-and-exhaust/sportster-motorcycle-air-intake-carburetor-efi-fuel-and-exhaust/195078-1974-manifold-seal-clamps-question?t=2071371>

23)

66xlch of the XLFORUM

<https://www.xlforum.net/forum/sportster-motorcycle-forum/sportster-motorcycle-era-specific-and-model-specific/ironhead-sportster-motorcycle-talk-1957-1985/113554-intake-manifold-leak-plague/page5?t=1079081&page=5>

24)

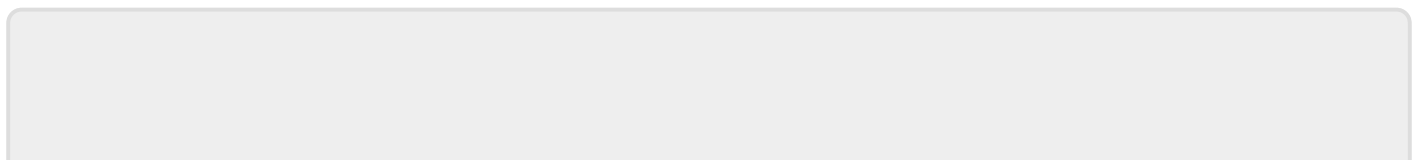
photo by 66xlch of the XLFORUM

<https://www.xlforum.net/forum/sportster-motorcycle-forum/sportster-motorcycle-era-specific-and-model-specific/ironhead-sportster-motorcycle-talk-1957-1985/113554-intake-manifold-leak-plague/page5?t=1079081&page=5>

25)

photo by DirtyCory of the XLFORUM

<https://www.xlforum.net/forum/sportster-motorcycle-forum/sportster-motorcycle-era-specific-and-model-specific/ironhead-sportster-motorcycle-talk-1957-1985/113554-intake-manifold-leak-plague/page7?t=1079081&page=7>



From:  
<https://sportsterpedia.com/> - **Sportsterpedia**

Permanent link:  
<https://sportsterpedia.com/doku.php/techtalk:ih:carb07>

Last update: **2023/12/30 00:29**

