

Buell[®]

AMERICAN MOTORCYCLES

BUELL

BYTES

COMPUTER GENERATED
TECHNICAL UPDATES & INFORMATION
FOR BUELL MOTORCYCLES

ISSUE #7

JUNE 1997

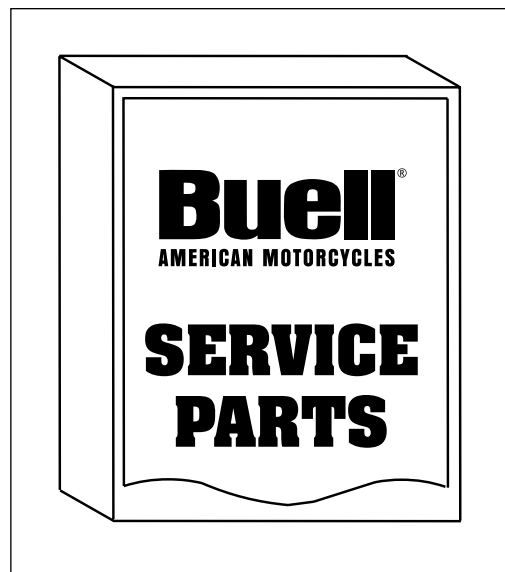
TABLE OF CONTENTS

<u>PAGE</u>	<u>TOPIC</u>
1	<ul style="list-style-type: none">• Brake Caliper Shimming• Swingarm Changes
2	<ul style="list-style-type: none">• 1997 M2 Service Manual Update• Warranty Job Code Change• Diode Service Parts Kit
3	<ul style="list-style-type: none">• Parts Catalog Revisions

FRONT BRAKE CALIPER SHIMMING

Some 1997 vehicles were built with shims placed between the two front brake caliper and fork leg mounting bosses. This is being done, in production, to properly position the caliper over the brake rotor.

If you are servicing a vehicle or installing replacement parts, it is important that the original shims be reinstalled or new shims installed as necessary. Failure to correctly shim calipers could result in component wear or personal injury. The kit, part number 44001-97Y contains six shims, two of each size (0.16", 0.32" & 0.62"), in a package.



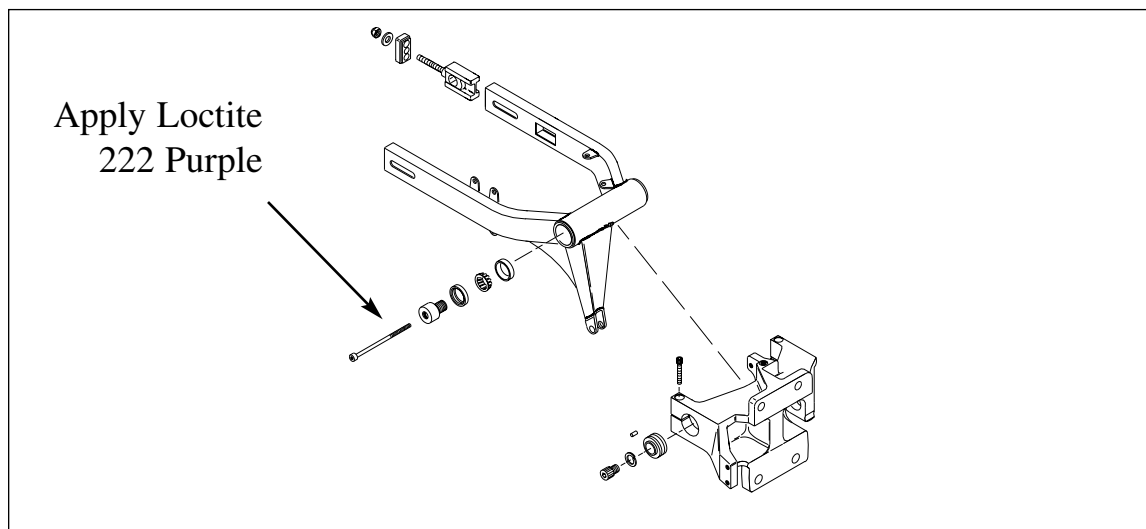
At each mounting boss use a combination of shims as needed to center the brake pads equally over the rotor.

SWINGARM CHANGES

Changes have been made to 1997 swingarms to provide for easier bearing adjustment and preload. The adjusting bolt preload has been revised to 2.75-3.75 lbs. Loctite 222 Purple is now recommended for the bolt's threads. Please note these changes to the following Service Manual pages:

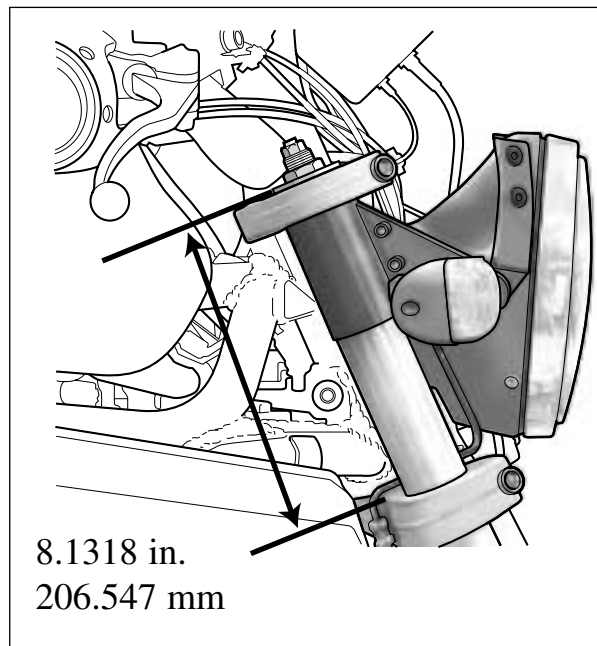
1997 SI Lightning Service Manual Supplement (99490-97YA)
1997 M2 CycIone Service Manual (99491-97)

page 16
pages 2-35/37



1997 M2 SERVICE MANUAL UPDATE

Please note a correction to the artwork illustrating the front fork installed height for the M2 Cyclone front fork tubes. The manual artwork on page 2-33 incorrectly illustrates the installed height of the front fork tubes. The specification given is correct, however the fork tube should be installed with the fork cap level with the upper triple tree. The illustration shown here gives the corrected location.



JOB TIME CODE CHANGE

The job Time Code for warranty replacement of fork locks on M2 and S3/T models has changed. Labor code 2330, which was 0.3 hrs., has been readjusted to 0.6 hrs. Please note this change in your warranty Job Time Code manual on pages 1-2 for both models. Complete servicing procedures for the barrel style fork locks will be included in the 1997 S3/T Service Manual (99489-97Y).

SERVICE PARTS KIT

The starter interlock system on all 1997 models and 1996 SVs contains two serviceable diodes. The diodes are now available in a kit, part number 89404-97Y, with the additional parts needed for replacement. Pricing was not available at the time of this printing.

1997 BUELL S3 & S3T PARTS CATALOG

Please note the following corrections in your Parts Catalog.

- Page 65, index number 20 lists the following part numbers described as SADDLEBAG COVER:

These parts numbers are actually **SADDLEBAG ASSEMBLIES COMPLETE WITH COVERS** and the descriptions should read:

90430-97YYF, SADDLEBAG ASM. complete with narrow cover, - right (black magic)
90430-97YYE, SADDLEBAG ASM. complete with narrow cover, - right (amazon green)
90430-97YYA, SADDLEBAG ASM. complete with narrow cover, - right (billet metallic)
90431-97YYF, SADDLEBAG ASM. complete with narrow cover, - left (black magic)
90431-97YYE, SADDLEBAG ASM. complete with narrow cover, - left (amazon green)
90431-97YYA, SADDLEBAG ASM. complete with narrow cover, - left (billet metallic)

The **NARROW SADDLEBAG COVERS** are available separately by ordering the following part numbers:

90515-97YYF, SADDLEBAG COVER, narrow, left (black magic)
90515-97YYE, SADDLEBAG COVER, narrow, left (amazon green)
90515-97YYA, SADDLEBAG COVER, narrow, left (billet metallic)
90516-97YYF, SADDLEBAG COVER, narrow, right (black magic)
90516-97YYE, SADDLEBAG COVER, narrow, right (amazon green)
90516-97YYA, SADDLEBAG COVER, narrow, right (billet metallic)

*Also listed on page 65 index number 20 are **PRIMED SADDLEBAG COVERS**;
90515-94Y and 90516-94Y.

These parts numbers are incorrect and should read:

90515-97Y SADDLEBAG COVER, narrow, left (primed)
90516-97Y SADDLEBAG COVER, narrow, right (primed)