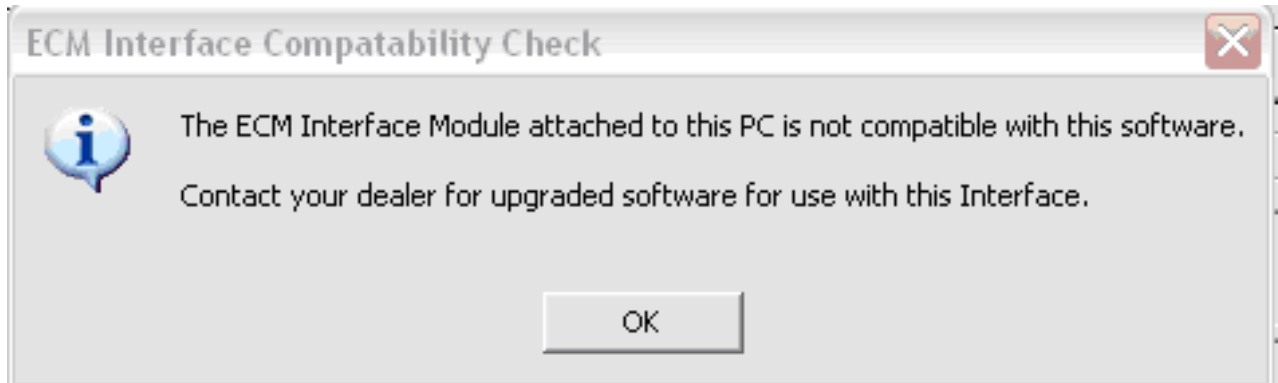


## Screamin' Eagle Pro Race Tuner Error Messages

Communications issue with ECM's and Race Tuners can usually be attributed to low battery voltage, poor cable connections, incorrect software version or calibration choices. These issues have been covered in past Tech Tips. In the near future we plan to gather all the information we have on Race Tuners, such as Tech Tips, Service Bulletins and post it all in one location. Stay Tuned.

But recently, we have seen a rise in calls and claims on EFI Race Tuners (part number 32107-01L) with the following error message:



We have tested inventory and found that some kits were defective. Inventory has been cleansed and backorders have been cleared.

Should you have any kits in stock that fail to communicate and also show this error message, replace them and file a DFS warranty claim on the kits.

The affected package dates were 03/18/2008-03/26/2008.

**NOTE: Not all kits with this package date are defective.**

A package date of 04/09/2008 or later is a good clean date.

You will need to test each kit as you install it, or prior to retail sale. It can be tested by connecting to a motorcycle and selecting Get ECM Info. If you don't get any errors when you click Get ECM Info, the part should be considered good. This does not require the interface to be married or linked to the ECM.

It is rare, but possible to see this error message on kits outside this effected date range. If you have a kit you suspect is defective with an earlier date range, install a newer kit and see if it communicates. If you then find the original kit was defective, file DFS and replace.