

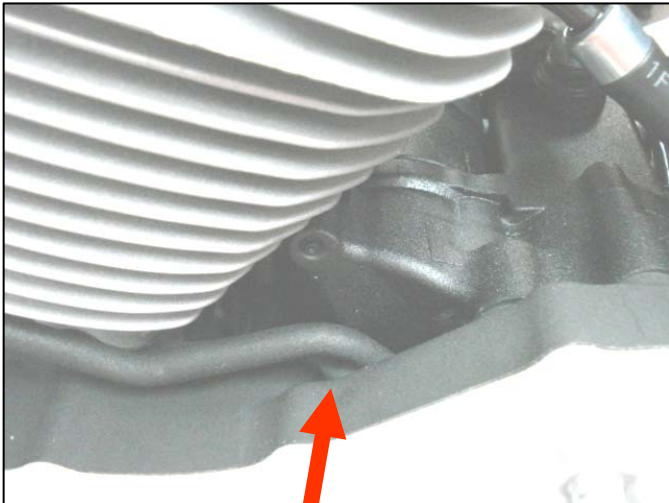
XR 1200 Transmission Vent Hose Routing

Some early 2009 XR 1200 models could have a kinked transmission vent hose under the starter motor.

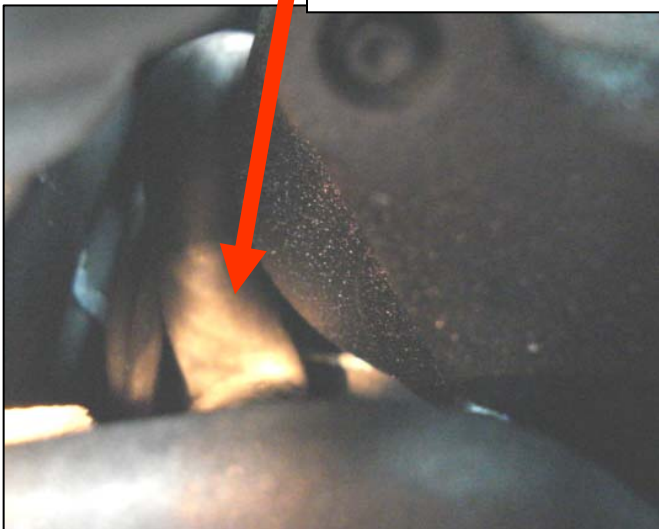
If this line is restricted in any way, it is possible for oil to be forced out of the primary area at the clutch cable adjuster as the air from inside the transmission / primary case expands with temperature.

To correct this, simply direct the end of the hose downward between the starter motor and primary case. It may be necessary to rotate the hose and clamp on the transmission vent fitting to ensure that the hose does not contact the rear cylinder cooling fins.

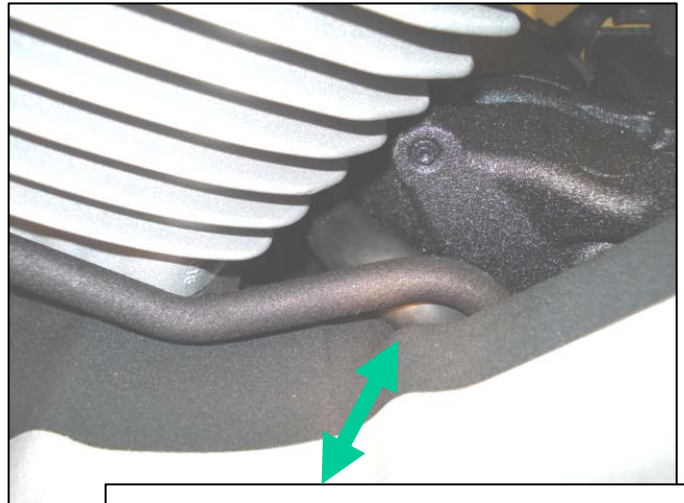
INCORRECT



The vent hose may be Pushed down and kinked.



CORRECT



The vent hose (rubber) is positioned Between the oil return line (hard) and the starter motor.