

# Table of Contents

|   |   |
|---|---|
| <b>REF: Body Parts - Sub-01J</b> .....                      | 1 |
| <b>REF: Wheels, Brakes &amp; Tires</b> .....                | 1 |
| <b>Brake Pedal Mods</b> .....                               | 1 |
| <i>Custom trap style brake pedal</i> .....                  | 1 |
| <i>Mod for Using a Shifter Peg on the Brake Lever</i> ..... | 3 |
| <i>Brake Pedal Pads / Risers</i> .....                      | 4 |
| <i>Pics of Brake Pedals</i> .....                           | 4 |



[Go To Technical Menu](#)

## REF: Body Parts - Sub-01J

[Go To Technical Menu](#)

## REF: Wheels, Brakes & Tires

### Brake Pedal Mods

#### Custom trap style brake pedal



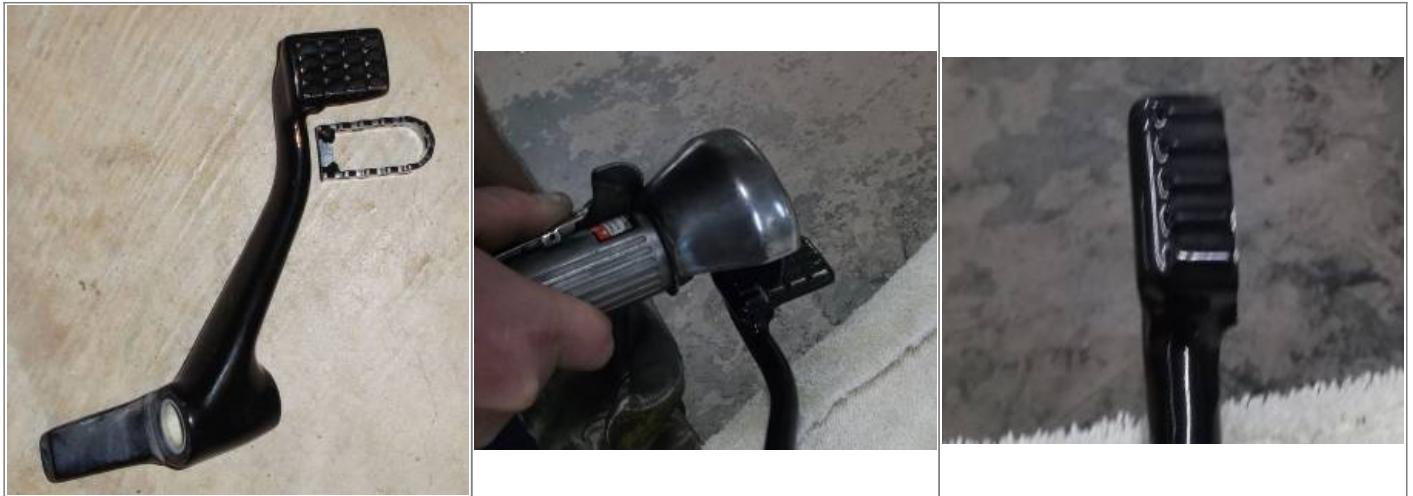
Custom trap style brake pedal. <sup>1)</sup>

The brake pedal has to be removed for cutting and shaping.

First, to cut the OEM 'arm' off with an angle grinder.

Then to shape it flat on top and the right side and drill & tap a hole to install the "Trap" Style pedal.

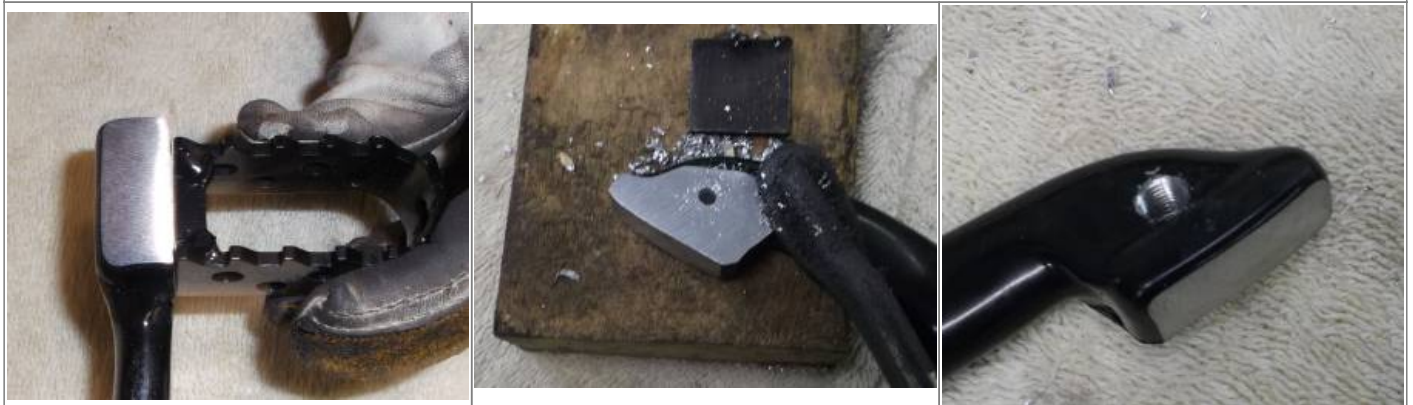
The existing pedal was cut off with an angle grinder. <sup>2)</sup>



Brake arm sanded smooth on top and the side. <sup>3)</sup>



Pedal fitted to mark the hole location. The hole was drilled with a 17/64" bit, and then threaded with a 5/16"-24 tap. (same bolt that comes with the Trap Shift Peg, or the same thread as used on the shifter) This hole could have been drilled straight through with a nut on the end of the bolt but this way looks cleaner. <sup>4)</sup>



This could be powder coated with the removal of the bushing in the brake arm.

This is how much was original cut off. <sup>5)</sup>

Final fit to match edges if needed. <sup>6)</sup>

Bolted, painted and ready to go. <sup>7)</sup>



## Mod for Using a Shifter Peg on the Brake Lever

This mod was also saws off the protruding edge of the pedal to drill and tap for a peg. This way you can match the brake pedal with the shifter peg.



The stock brake pedal was cut off the lever.

Make the cuts. <sup>10)</sup>



The end was shaped and a hole was drilled and tapped 1/4"x20 to accept the shifter pedal. A 17mm socket was used to drive out the plastic sleeve before powder coating. Be sure to let the powder coater (if not you) all areas to tape off before application. Else the powder coat will end up hindering installation and / or operation.

Shape, tap and powder coat. <sup>11)</sup>



Finished product. <sup>12)</sup>



## Brake Pedal Pads / Risers

This is a pad from a Panhead brake pedal. <sup>13)</sup>



## Pics of Brake Pedals



14)

**Go To Technical Menu**

- 1) photo by DK Custom of the XLFORUM <http://xlforum.net/forums/showthread.php?t=1582019&page=17>
- 2) , 3)
- photos by DK Custom of the XLFORUM <http://xlforum.net/forums/showthread.php?t=1582019&page=5>
- 4) , 6) , 7)
- photos by DK Custom of the XLFORUM <http://xlforum.net/forums/showthread.php?t=1582019&page=6>
- 5)
- photo by DK Custom of the XLFORUM <http://xlforum.net/forums/showthread.php?t=1582019&page=6>
- 8) , 9)
- photo by TazzinTroll of the XLFORUM <http://xlforum.net/forums/showthread.php?t=77774>
- 10)
- photo by HarleyScuba of the XLFORUM <http://xlforum.net/forums/showthread.php?t=790182&page=2>
- 11) , 12)
- photos by HarleyScuba of the XLFORUM <http://xlforum.net/forums/showthread.php?t=790182&page=2>
- 13)
- photo by Bob F of the XLFORUM <http://xlforum.net/forums/showthread.php?t=77774&page=5>
- 14)
- photo by renpia of the XLFORUM <http://xlforum.net/forums/showthread.php?p=741784>

From:  
<http://www.sportsterpedia.com/> - **Sportsterpedia**

Permanent link:  
<http://www.sportsterpedia.com/doku.php/techtalk:ref:body01j>

Last update: **2019/07/18 03:33**

